



Make information visible with a CASIO label printer to help manage shared documents and other items. The working environment will be more efficient with anyone able to identify items at a glance.

At the desks

Even detailed text on labels is easy to read. Labels let you create clear titles, even if you don't have confidence in your handwriting.



Office equipment

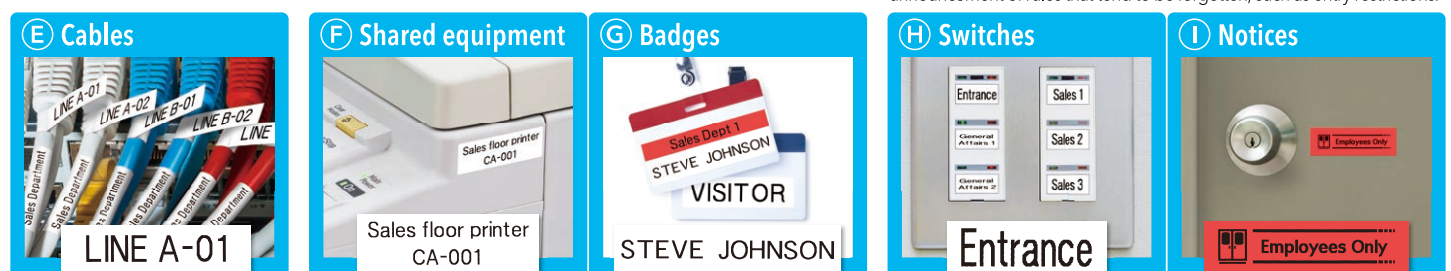
Easily arrange cables that tend to be in array.

Equipment/supplies management

Apply labels on equipment that sees long-term use to enable better management.

Notices

Labels allow easy identification of light buttons - no more trying each button until the right light comes on! They also allow easy and thorough announcement of rules that tend to be forgotten, such as entry restrictions.



Convenient tapes for office use

High-Strength Adhesive Tape

High-strength adhesive tape provides peace of mind when managing shared equipment that sees long-term use.



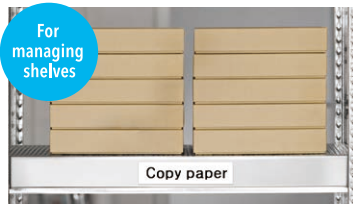
For equipment management, etc.

Tape colour / text colour **BLACK on WHITE** Tape width **18mm 12mm 9mm**

Magnetic Tape

*For use with models KL-G2 and KL-7400 only

Magnets are a big help if you want to change the position of labels that are attached to items such as steel shelves and whiteboards.

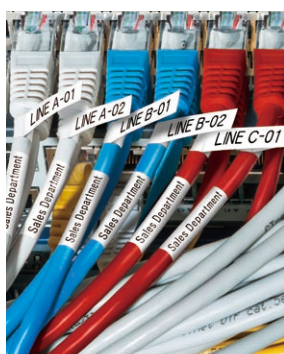
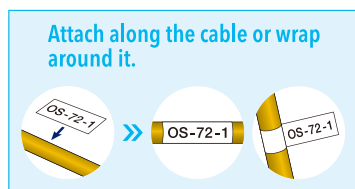


Tape colour / text colour **BLACK on WHITE** Tape width **24mm**



Cable Flexible Tape

Organise cables that are hard to tell apart with cable tape attachable to curved surfaces.



Tape colour / text colour **BLACK on WHITE** Tape width **18mm 12mm 9mm**

Fluorescent Tape

Make reminders stand out more with bright colours of fluorescent tape that catch the eye.



Choose from four bright colours

FLUORESCENT PINK **FLUORESCENT ORANGE**

FLUORESCENT GREEN **FLUORESCENT YELLOW**

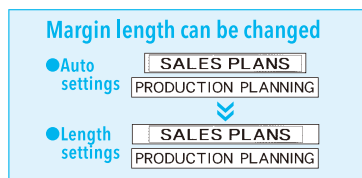
Tape colour / text colour **Pink Orange Green Yellow** Tape width **18mm 12mm 9mm**

Solid backup for business through a wide range of functions

Tape Length

*KL-G2 / KL-7400 / KL-HD1 / KL-820 / KL-130

Different tape lengths depending on the length of text looks sloppy. With the length setting, you can print different text at the same length to organise in a tidy manner.



Numbering

*KL-G2 / KL-7400 / KL-820 [12 mm or wider tape]

The numbering feature allows easy printing when inputting each number for labels with consecutive numbers would be a hassle. This is convenient for managing machinery and equipment.



*Numbering from 0 to 99999 with the KL-G2 and to 999 with the KL-7400.
*You can print up to 100 numbered labels per print operation with the KL-G2 and KL-7400, and up to 9 numbered labels per print operation with the KL-820.



The backing paper is not cut. Slit

*Models with half-cut function : KL-G2/KL-7400

Designed Logo printing

*KL-G2 / KL-7400 / KL-HD1 / KL-820 / KL-130 [12 mm or wider tape]

Designed Logo with illustrations greatly improve ease of understanding even for cautions that would be hard to understand by text alone. 60 types are available.

Designed Logo examples



*KL-G2 / KL-HD1 / KL-130 : Available in 8 languages (English / Spanish / French / German / Italian / Swedish / Portuguese / Indonesian)
*KL-7400 / KL-820 : Available in 6 languages (English / Spanish / French / German / Italian / Swedish)

Index Label

*KL-G2 [24 mm tape only]

Index labels make for easy-to-understand organisation of documents. The information you are looking for will be identifiable at a glance.

